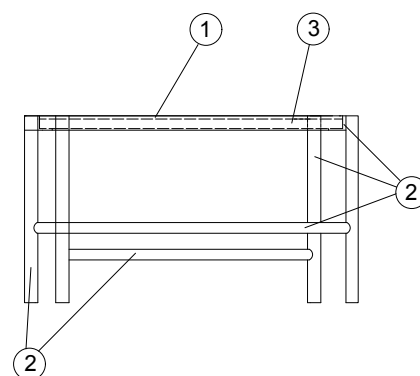
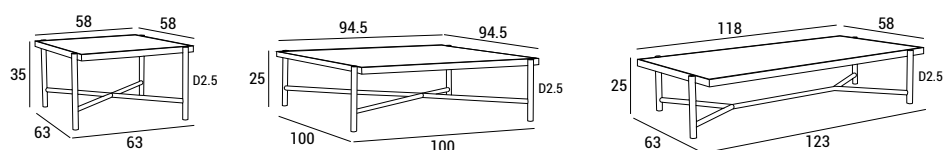




- 1 - piano in ceramica, spessore 6 mm;
- 2 - base in metallo verniciato;
- 3 - piana di sostegno in legno.

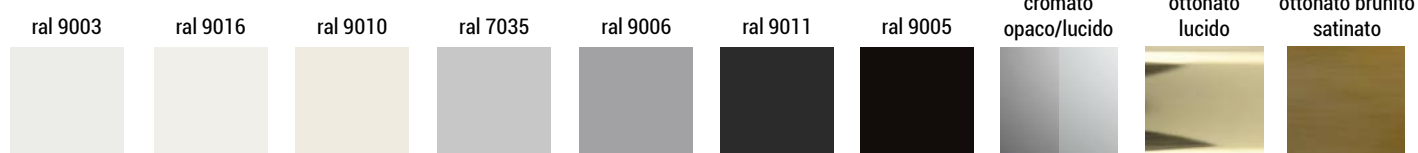


## DIMENSIONI



## FINITURE BASI METALLICHE

DI SERIE



canna di fucile  
lucido

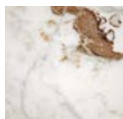


OPTIONAL

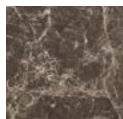


## FINITURE PIANI CERAMICA

breccia



emperador



gris



noisette



sahara noir

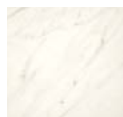


## FINITURE PIANI MARMO

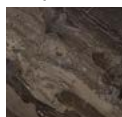
bianco carrara



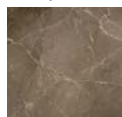
bianco  
calacatta



capuccino



moresco  
imperiale



noir saint  
laurent



nero marquina



## INFORMAZIONI TECNICHE

	kg	m <sup>3</sup>
REA QUADRATO	30	0.19
REA RETTANGOLARE	42	0.30